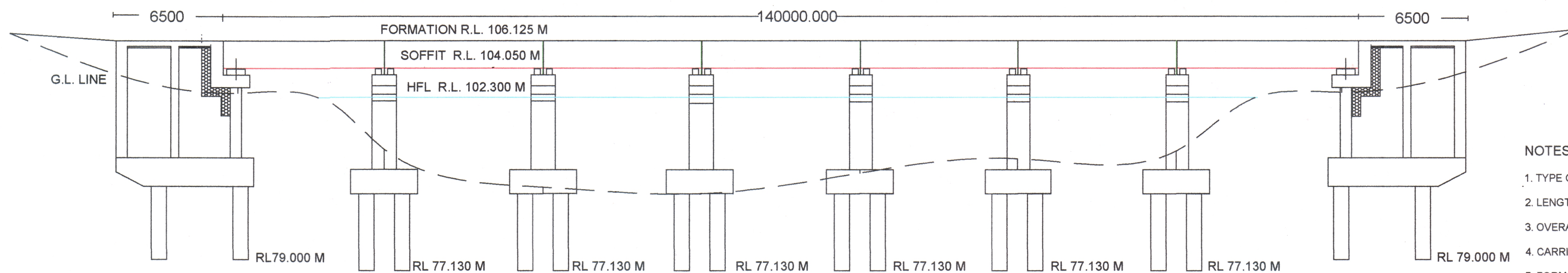


G.A.D FOR CONSTRUCTION OF HIGH LEVEL BRIDGE ACROSS KANHAR RIVER ON EKAMBA- BHATA (UKAI) ROAD

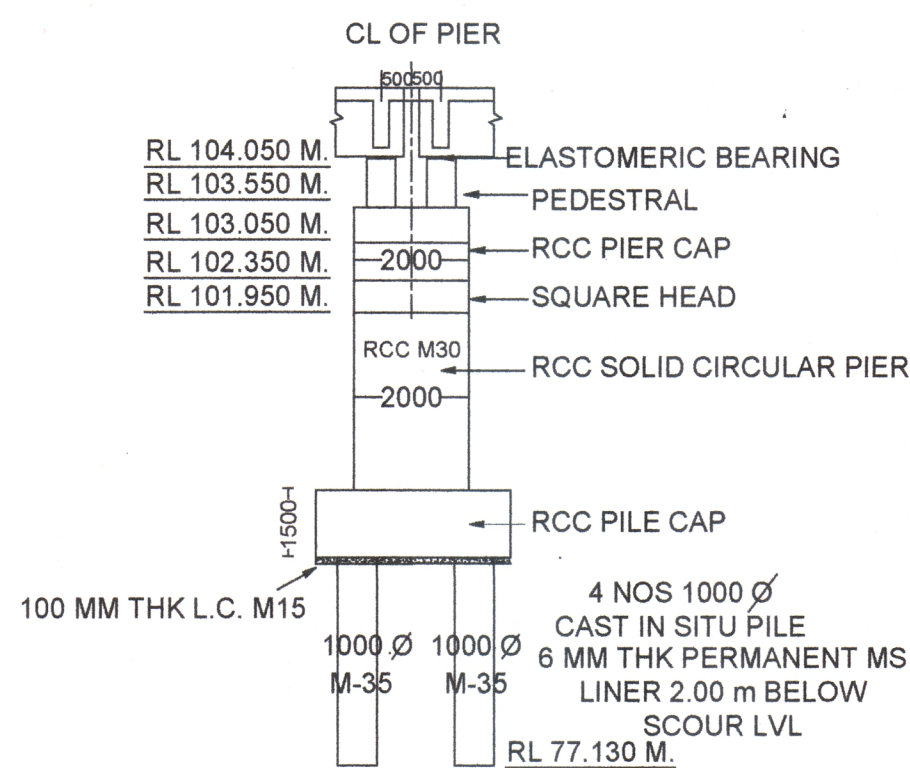
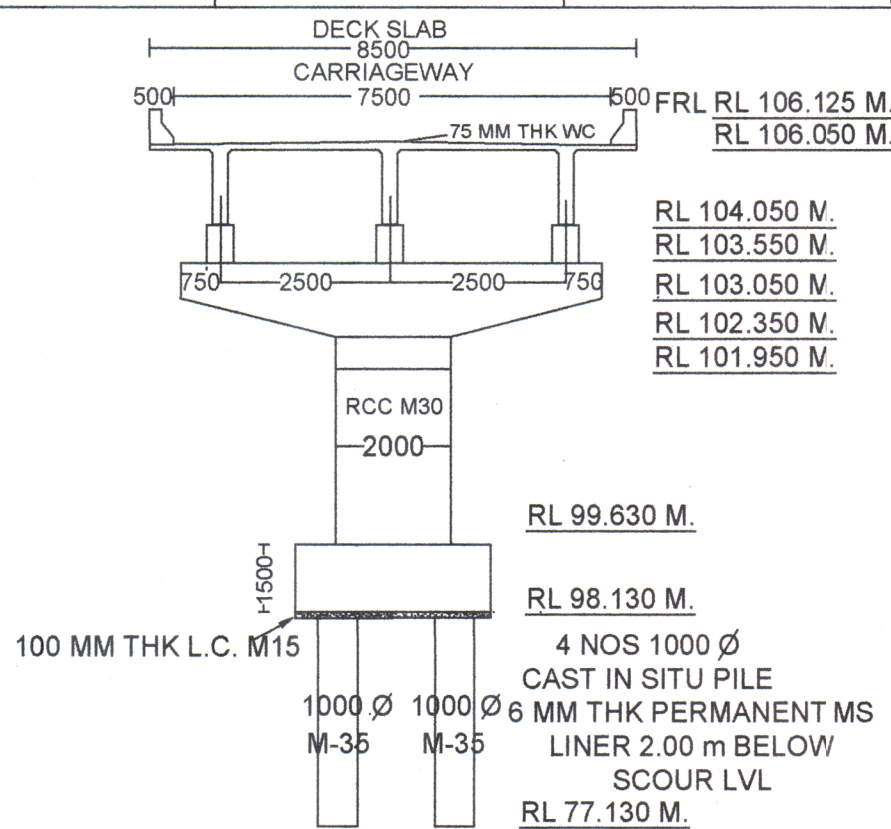
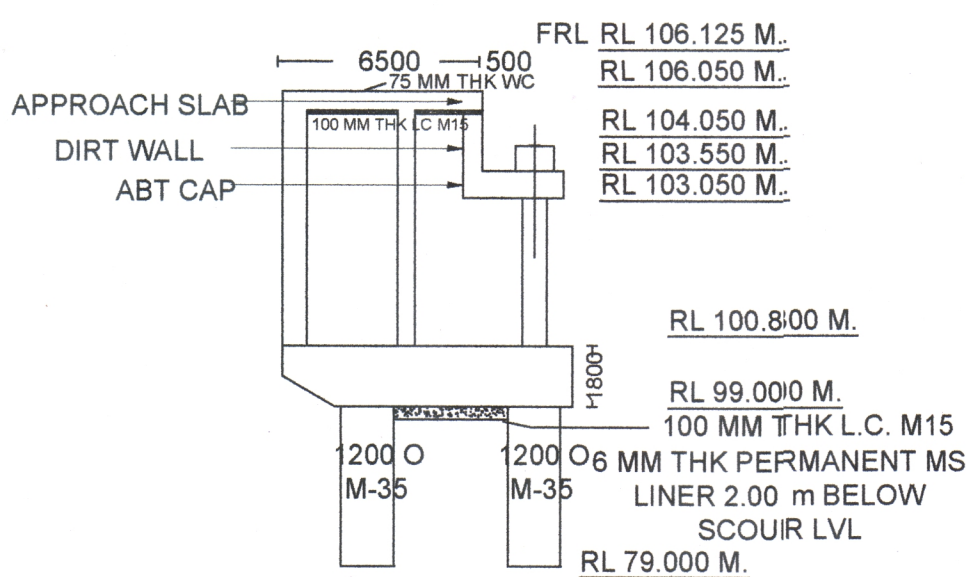
<<<<<BHATTHA LENGTH OF BRIDGE 140.00 M (7 SPAN @ 20.00 M EACH) EKAMBA>>>>>



DATUM R.L. 70.00 M															
	(A1)		(P1)		(P2)		(P3)		(P4)		(P5)		(P6)		(A2)
GROUND LEVEL (M)	102.950	102.300	101.810		98.350		98.130		99.040		99.820		99.860	102.300	102.970
CHAINAGE (M)	230.000	240.000	250.000		270.000		290.000		310.000		330.000		350.000	360.000	370.000

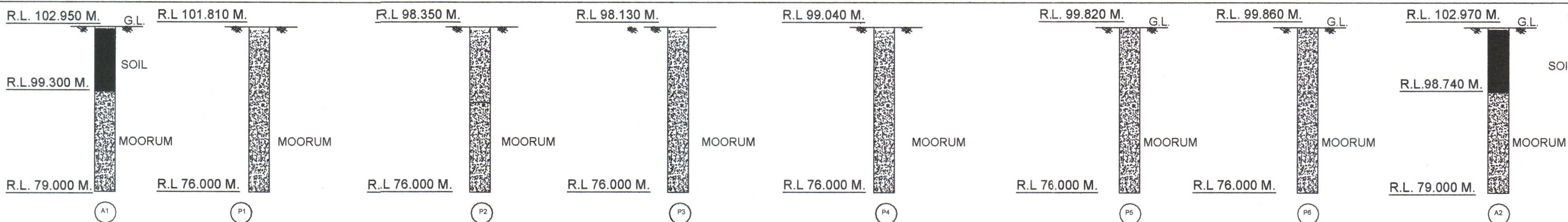
NOTES :

1. TYPE OF BRIDGE HIGH LEVEL
2. LENGTH OF BRIDGE 140.00 M. 07 SAPN @ 20.00 M. EACH
3. OVERALL WIDTH 02 NOS ABUTMENT @ 6.50 M EACH 08.500 M.
4. CARRIAGE WAY 07.500 M.
5. FORMATION LEVEL R.L. 106.125 M.
6. SOFFIT LEVEL R.L. 104.050 M.
7. H.F.L. R.L. 102.300 M.
8. L.W.L. / L.B.L. R.L. 98.130 M / 98.120 M
9. DESIGN DISCHARGE 680.827 CUMEC
10. DESIGN VELOCITY 2.177 M/SEC
11. CATCHMENT AREA 111.106 Sq/KM.
12. SCOUR LEVEL
A. ABUTMENT R.L. 96.899 M OR ROCK LEVEL WHICHEVER IS HIGHER.
B. PIER R.L. 93.794 M OR ROCK LEVEL WHICHEVER IS HIGHER.
13. TYPE OF FOUNDATION FRICTION PILE
14. FOUNDATION LEVEL
A. ABUTMENT A1 R.L. - 79.000 M A2 - R.L. - 79.000 M
B. PIER P1 R.L. - 77.130 M P2 - R.L. - 77.130 M
P3 R.L. - 77.130 M P4 - R.L. - 77.130 M
P5 R.L. - 77.130 M P6 - R.L. - 77.130 M
15. TYPE OF SUBSTRUCTURE
A. PIER R.C.C. CIRCULAR PIER
B. ABUTMENT R.C.C. BOX TYPE
16. TYPE OF BEARING ELASTOMERIC BEARING
17. TYPE OF SUPER STRUCTURE RCC T-BEAM SLAB
18. DESIGN LOADING IRC 70R LOADING FOR SINGLE LANE OR IRC CLASS "A" LOADING FOR TWO LANE WHICHEVER PRODUCES SEVERE EFFECT.
19. EXPANSION JOINT STRIP SEAL EXPANSION JOINT
20. APPROACH SLAB STRUCTURAL APPROACH SLAB
21. KERB i/c PAINTING & DRAINAGE SPOUT NAME PLATE AS PER STANDARD DRAWING OF MORTH
22. S.B.C. 35 T/m2
23. WEARING COAT 75MM THICK R.C.C. WEARING COAT AS PER STD. DRG.
24. CRASH BARRIER R.C.C. CRASH BARRIER AS PER MORTH.
25. NAME PLATES AS PER DEPARTMENTAL STD. DRG.



DETAILS OF PILE FOUNDATION

DETAILS OF PIERS



OFFICE OF THE CHIEF ENGINEER P.W.D. BRIDGE CONSTRUCTION ZONE RAIPUR (C.G.)			
PROJECT CONST. OF HIGH LEVEL BRIDGE ACROSS KANHAR RIVER ON EKAMBA-BHATA (UKAI) ROAD			
TITLE GENERAL ARRANGEMENT DRAWING			
S.D.O.	E.E.	S.E.	C.E.
SUB. ENG.	DRG. NO.- GAD/01	DATE -	SCALE - N.T.S.